

Manual Tubular Motor Specification

AC TUBULAR MOTOR

M: Manual
Mechanic Limit + Manual

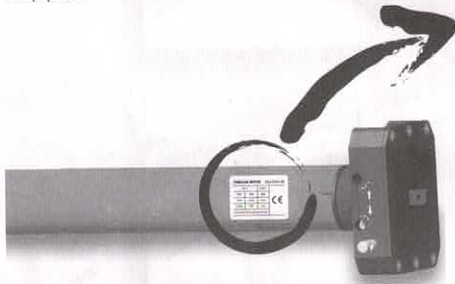
By DM45M
DM59M



Version No.: A/02

T
Technical Support

Product Nameplate



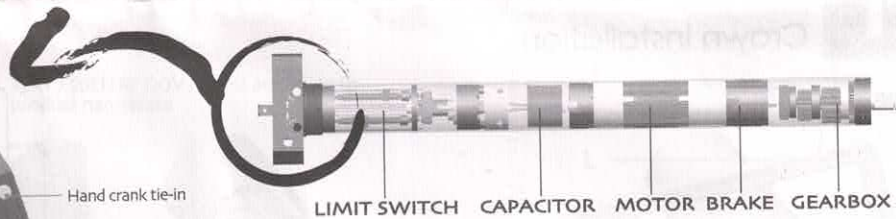
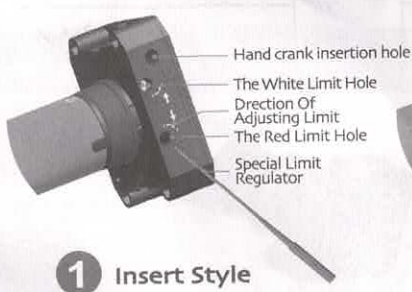
Rated Torque	40N.m	15min ⁻¹	Motor Model	DM45M-40
Rated Voltage	230V	50Hz	Rated Speed	15min ⁻¹
Rated Power	170W	0.77A	Diameter Of The Motor Tube	Ø45
Motor Weight	3.16kg	IP44	Product Certificate	CE
		I.c.l.H	Insulation Degree	
			Protection Degree	

Frequency: 50Hz
Work Time: 15min⁻¹
Rated Current: 0.77A
Rated Voltage: 230V
Rated Power: 170W
Motor Weight: 3.16kg
Tubular Single Phase Asynchronous Motor

Model Of Motor → **DM 45 M - 40 / 15**
Tubular Motor Tube Diameter Manual Type Rated Torque (N.m) Rated Speed (rpm)

T
Technical Support

Instruction Of The Motor

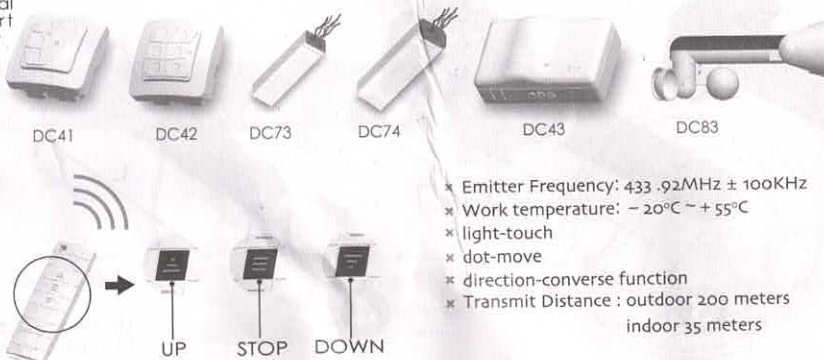


Hand crank accessories equipment

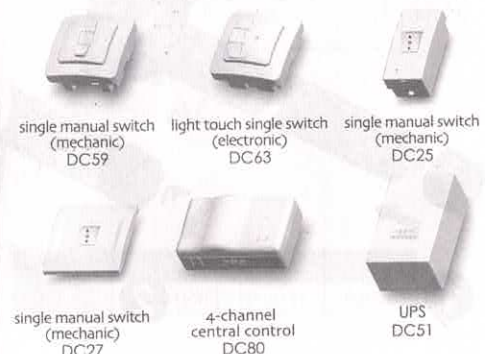


A
Technical Support

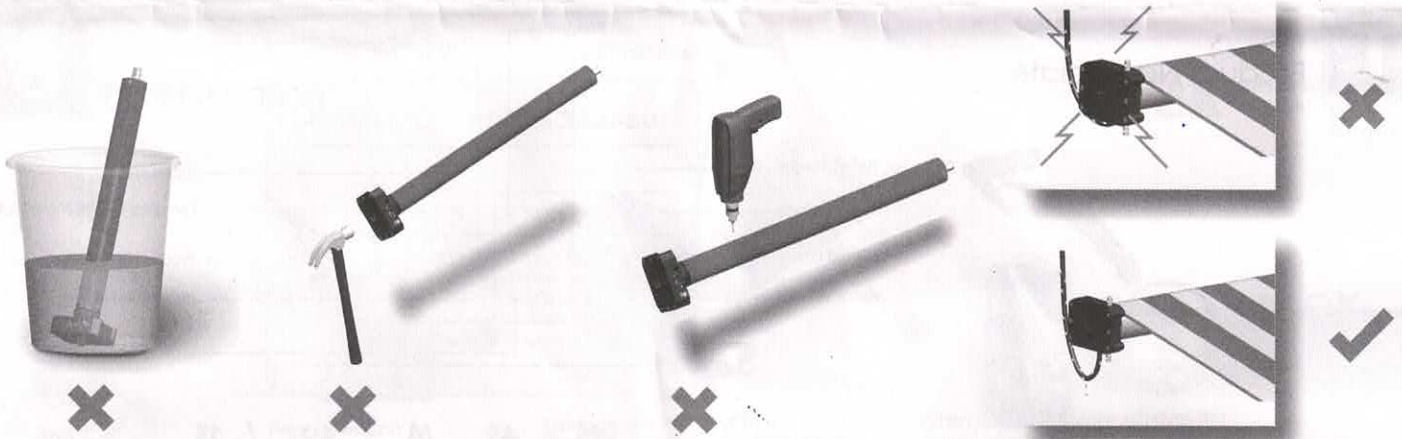
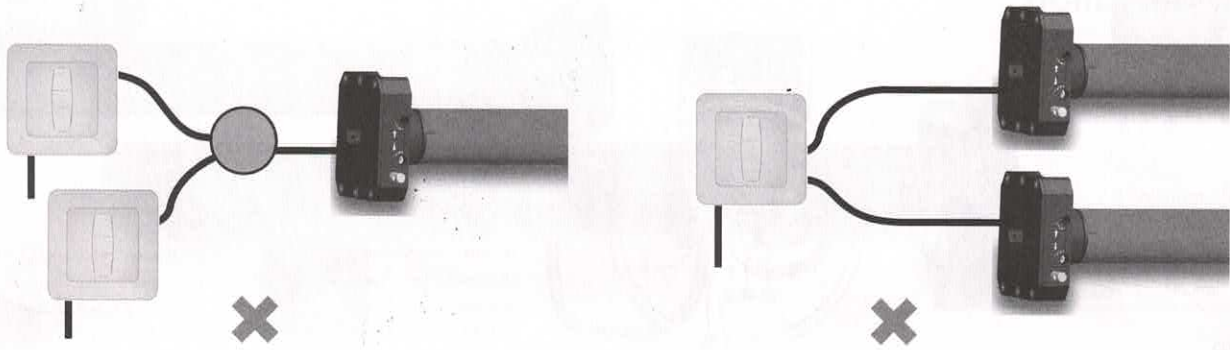
Matchable Control System



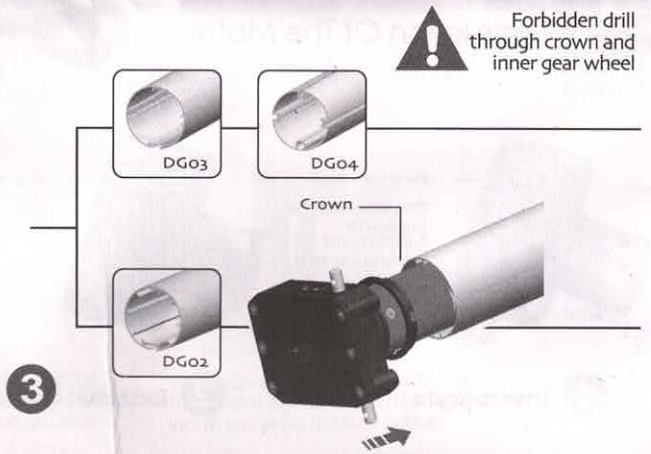
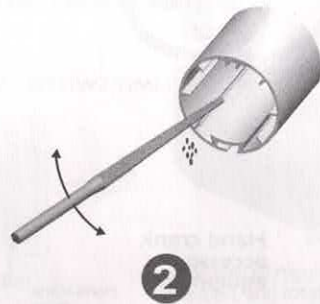
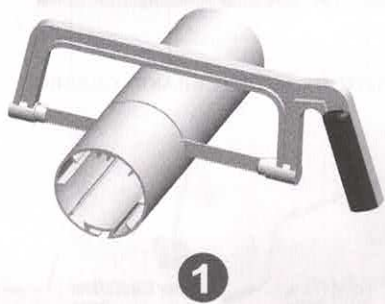
Other Control System



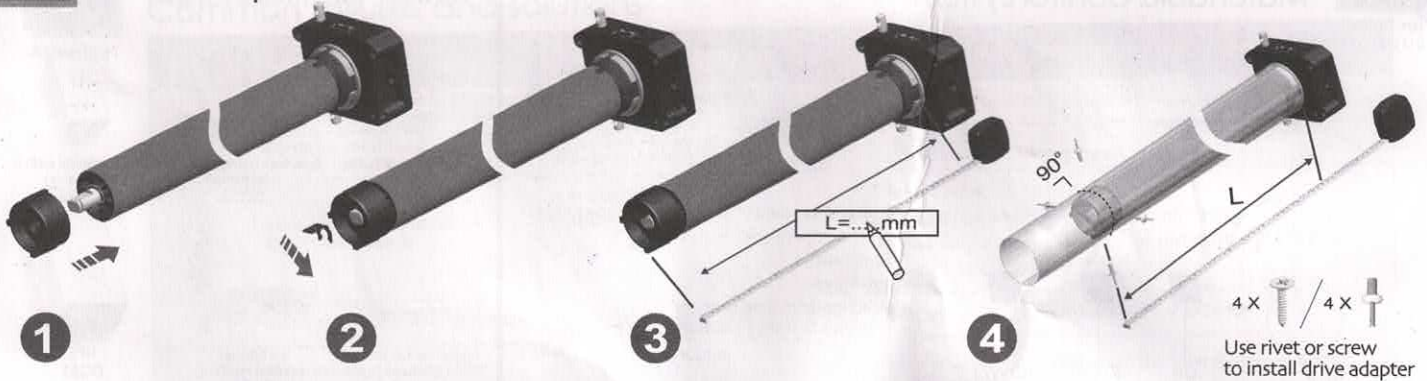
! Attention



1 Crown installation

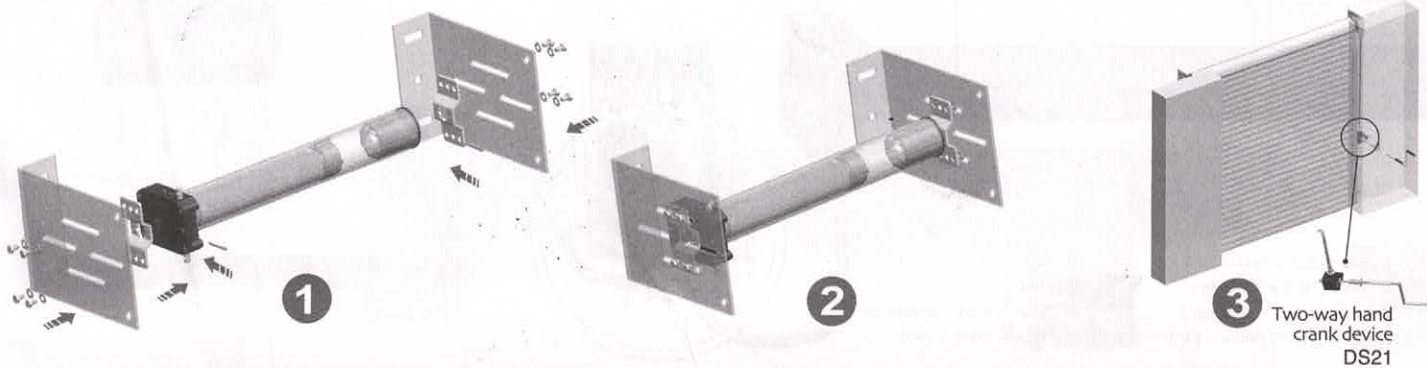


2 Drive adapter installation



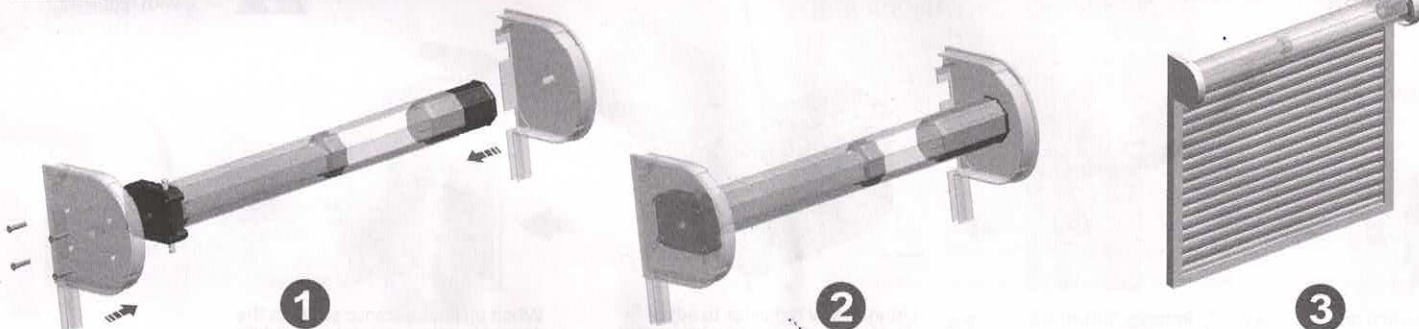
3

Bracket installation A



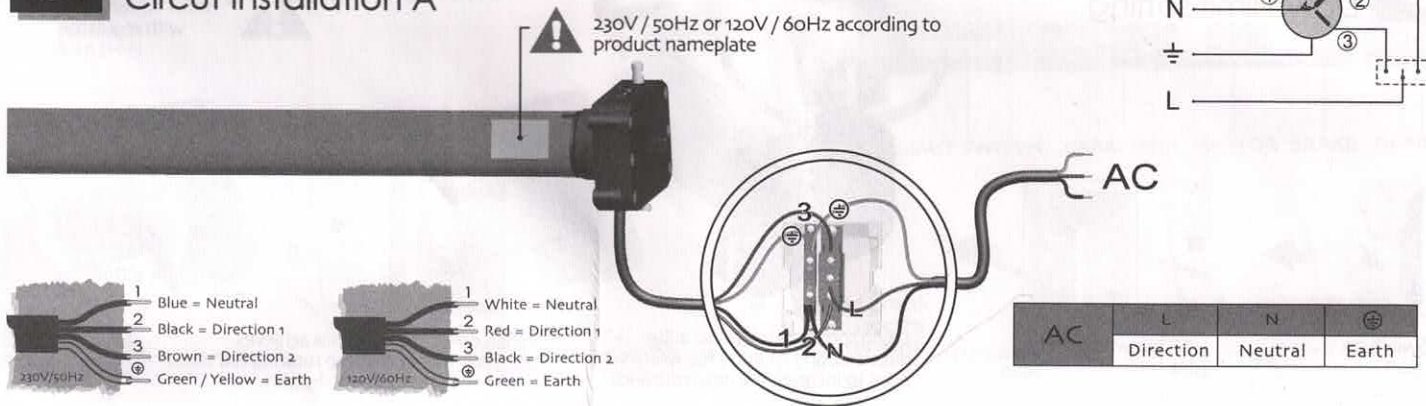
4

Bracket installation B



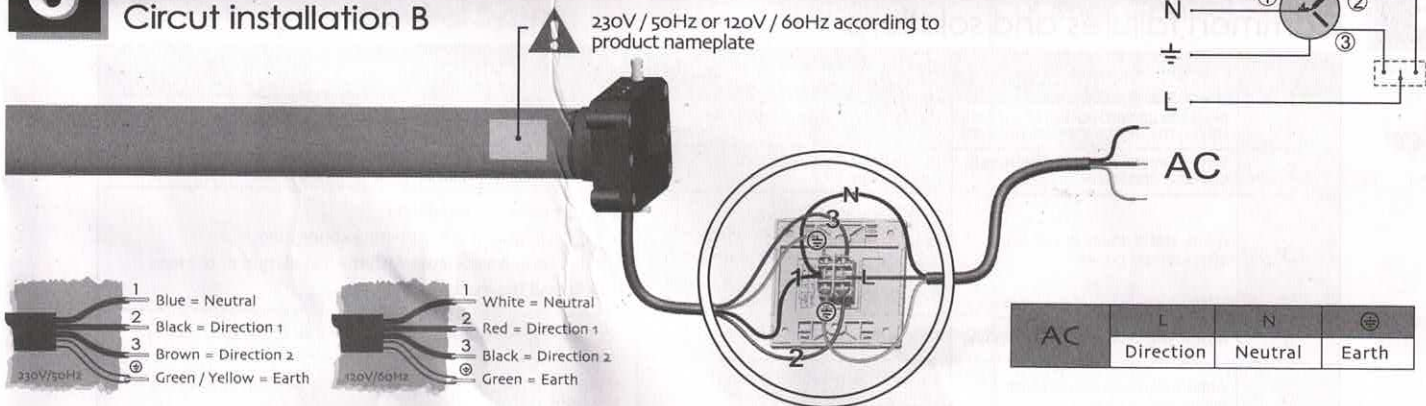
5

Circuit installation A



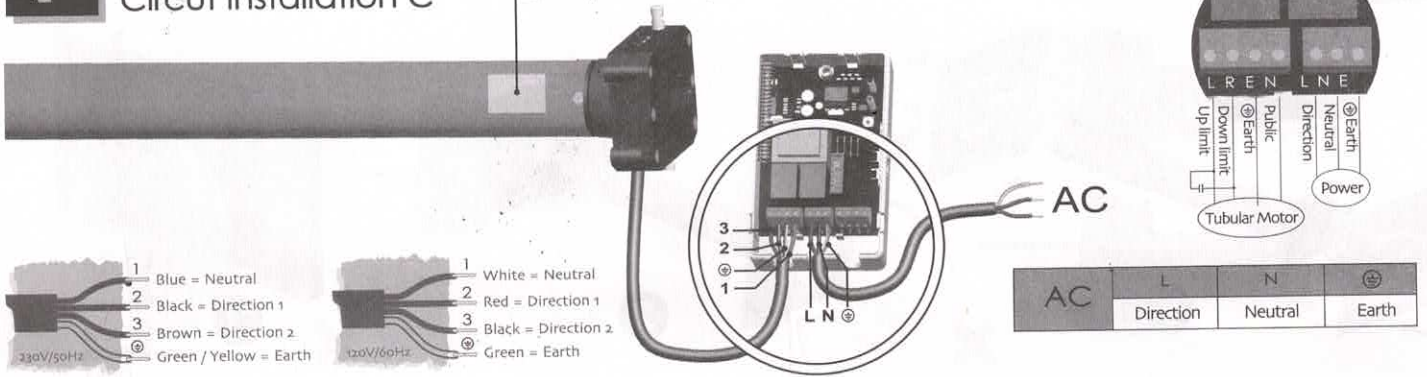
6

Circuit installation B



7 Circuit installation C

⚠ 230V / 50Hz or 120V / 60Hz according to product nameplate



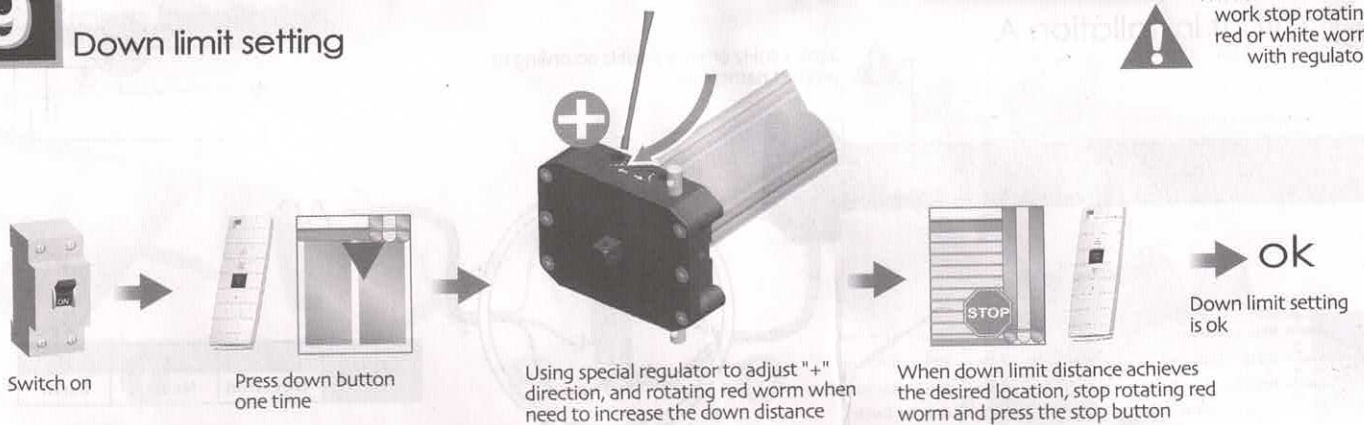
8 Up limit setting

⚠ When motor doesn't work stop rotating red or white worm with regulator.



9 Down limit setting

⚠ When motor doesn't work stop rotating red or white worm with regulator.



! Common failures and solutions

Attention

	Fail-phenomena	Failure causes	solutions failure recovery
1	Press the upward button of the controller, the shutter move downward	Inside wire connecting of the controller is wrong	Exchange the position of black wire and brown wire
2	Switch on, the drive adapter runs in one-way operation	Inside limit switch of motor doesn't open	Crown running one circle in the opposite direction of the drive adapter, then it works
3	motor starts slowly or not work after connect power	a. Power voltage is slow b. Wiring error c. Overload d. Improper installation	a. Adjust power to rated data b. Check circuit and correct wiring connecting c. Rated torque associated with the installation of the load d. Re-install the motor
4	Motor stops suddenly after running	Motor stops suddenly after running	Motor will automatically resume work after 20 minutes cooling
5	Abnormal sound during roller blinds in operation	Outer tube is too long, led the rolling shutter connects with both sides of bracket too tightly	If idler is active, propering make the tube shorter to avoid too tight status.