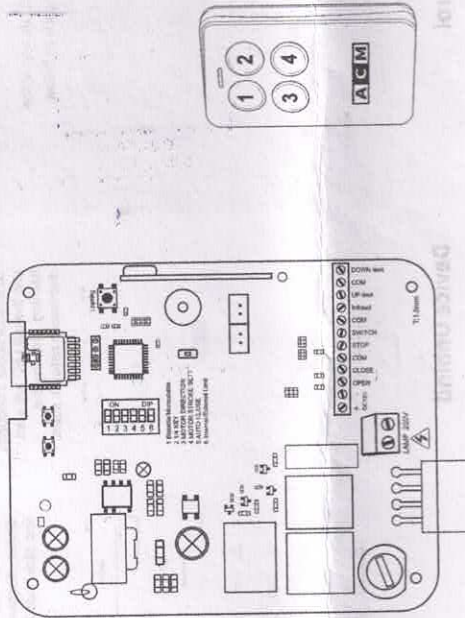


Motor Controller instruction

Specifications

1. Receiver
Input Voltage: AC200V-250V 50HZ/60HZ
Protective Tube: 250V 10A
Temperature: -20 C-65 C
Motor Voltage: AC200V-250V 50HZ/60HZ
Output Power: 200W
supports standard EV1527 and Juhui HSC301 remote control
2. Remote control
Working Voltage: 6V Working Current: 515mA
Temperature: -20 C-65 C Remote Distance: 50m
Working Frequency: 433MHz
Frequency: 433.92MHz

External terminals diagram



Function

Power on, and the buzzer beeps two times to go into standby mode

Learn on receiver.

1. Press the learnt button and release, the indicator lights, the buzzer beeps one time, and enter into the learning mode.
2. Press any key of the new remote control (note: don't press a combination of different keys), the Controller receiver gets signal, and the buzzer beeps one time with a long sound. The indicator light flashes for 2 seconds and then turns off and exit out of learning mode automatically.
3. If the remote control has learned, the buzzer will beep twice, the indicator light will turn off and exit out of learning mode automatically.
4. If there is no valid wireless signal received or the learnt button is pressed again and released within 8 seconds, the buzzer will beep twice, the indicator light will be off and exit out of learning mode automatically.

Distant learning

Press the first button and the second button of the remote control that have been learned at the same time, the controller indicator light is on, and the buzzer beeps once to enter the learning process. Then follow the on-board learning steps to learn.

Attention: The controller supports standard EV1527 (the rate 400, frequency 433.92MHz, four button values are 1, 2, 4, 8) and Juhui HSC301 remote control (rate 400, frequency 433.92MHz, four button values 2, 4, 8, 1), at most 100 groups, the user can choose which kind to use for learning, and this receives can accept uniformly.

Delete the code

Press and hold the learning button for 10 seconds, and the buzzer beeps one long sound. The indicator light will flash for 2 seconds and then turn off, and the code is deleted successfully.

Route Learning

1. Turn the dip switch 4 to ON, and press the first and third button of the remote control that you have learned. The buzzer will beep once to start the route learning.
2. You can press the remote control or external manual button to make the motor run for some time until it stops, and the controller will record the route learning time.
3. Press the first and third buttons on the remote control that you have learned again, and the buzzer will beep twice to end the route learning.
4. During the route learning, the motor stops for 8 seconds, the buzzer beeps twice, and it automatically exits the route learning. The learning failed.
5. Dip switch 4 switches to OFF during the route learning, the buzzer beeps twice, and the route learning is automatically exited. The learning failed.

Attention:

1. The route learning is not saved when the power is turned off, and the learning failure does not affect the previous successful learning time.
2. If the route setting time more than 150 seconds, the time will be set on 150 seconds automatically.

Automatic Closing Time Learning

1. Turn the dip switch 5 to ON, and meanwhile press the second and third keys of the remote control that have been learned. The buzzer will beep once, and the automatic closing time learning will start.
2. After waiting for the time you need, press the second and third keys of the remote control that you learned again, and the buzzer will beep twice to end the automatic closing time learning.
3. Turn the Dip switch 5 to OFF, during automatic closing time learning, the buzzer will beep twice, and automatic closing time learning is automatically exited. The learning failed.

Attention:

1. The automatic door closing time is saved after power off, you just need set once. Learning failure will not affect the time of previous successful learning.
2. If the route learning setting time exceeds 600 seconds, the time will be set to 600 seconds automatically.

Dip switch instruction:

Support online changes, can be changed at any time during use without power off.

1. Dip switch 1:

Dip switch 1 to set on OFF bistable mode (factory default)

Dip switch 1 to set on ON monostable mode

Bistable: when press the remote control button or manual external button, the receiver gets the signal, the relay will be ON, when release the button, and the relay will remain ON until you press the stop or close button.

Monostable: when press the remote control button or external button, the receiver gets the signal, the relay will be ON, when release the button, and the relay will turn OFF.

2. Dip switch 2:

-OFF four button mode (factory default)

ON single button mode

Four button mode: The four buttons of the remote control are OPEN, CLOSE, STOP and LOCK

Single button mode: Only the button is pressed when the remote control is learning, the other three buttons are invalid, and the single button operation cycle is Open, Stop, Close, Stop.

Attention: This is only valid for remote control.

3. Dip switch 3:

OFF motor forward (factory default).

ON motor reverse

Motor forward: The OPEN relay is activated when the OPEN button is pressed, and the CLOSE relay is activated when the CLOSE button is pressed

Motor reverse: The CLOSE relay is activated when the OPEN button is pressed, and the OPEN relay is activated when the CLOSE button is pressed.

Attention: In general the user should connect OPEN terminal with forward terminals, connect CLOSE terminals with reverse terminals. If the user finds connect reverse, you have no need to connect again the motor. Just adjust the dip switch 3 to ON position.

4. Dip switch 4:
OFF- motor running as normal mode (factory default),
ON- motor running as route learning mode

Normal mode: The motor runs until the stop signal is received or the limit stop is reached, up to 4 minutes

Route learning mode: The motor stops automatically when the set route learning time is reached

Attention:
1: During the route learning, dip switch 4 must also be turned ON; after learning you can adjust the dip switch according to the user's need
2: When the dip switch 4 is turned to ON but the route is not learned, the motor will run in normal mode, and the buzzer will beep every 2 seconds to remind the user that the dip switch should be turned to OFF or learn the route immediately.

4. Dip switch 5:
OFF-Automatic door closing function is off (factory default)
ON-Automatic door closing function is on

Automatic door closing function is off: When the motor OPEN operation stops, the motor will not automatically CLOSE
Automatic door closing function is on: When the motor OPEN operation stops, the motor automatically closes after the set time has passed.

Attention:
1: During the automatic door close learning, dip switch 5 must also be turned ON; after learning, you can adjust the dip switch according to the user's need

2: When the dip switch is turned ON but the auto-close time is not learned, the motor will not automatically close when the OPEN is stopped. The buzzer will beep every 2 seconds to remind the user that the dip switch should be turned to OFF or the automatic close time needs to be learned immediately

6. Dip switch 6:
OFF- auto limit switch
ON- trigger limit switch

Internal auto limit switch: It will select the automatic limit switch when the motor has a built-in limit switch, it will stop automatically when the motor reaches the limit switch position

External trigger limit switch: It will select the trigger limit switch when the motor has no built-in limit, and the upper and lower limit switches are connected to the external terminals

Remote control(four button model)and external key runs.

1. Press remote control OPEN button or external OPEN button, the motor will move forward and then start up OPEN relay, if the motor moves reverse and then it will start up CLOSE relay.
2. Press remote control CLOSE button or external CLOSE button, the motor moves forward and then start up CLOSE relay.
3. If the motor moves reverse and then it will start up OPEN relay.
3. Press STOP button or external STOP button, the motor will stop working.
4. Press Lock button on remote control, the buzzer beeps once, the remote control OPEN, CLOSE, STOP buttons will be locked up, the buttons will be invalid.
5. Press remote control Lock button again, the buzzer will beep twice, the remote control OPEN, CLOSE, STOP buttons will be unlocked.

Remote control (signal button mode) and external manual switch runs.

1. Press remote control learnt button or external switch button, the motor will repeat OPEN, STOP, CLOSE, STOP movement.
- Attention:
1. When the relay works external AC warning light lights on, when relay is disconnect, external AC warning light is off.
 2. The receiver will memorize the door mode automatically in signal button mode. For example, when the door opens, you turn off the power, next time power-on in signal button mode you press again to close the door. And Multif button mode and external buttons have OPEN button and CLOSE button, the receiver will not save current door status.
 3. the learnt button on the board, external manual button, totally five buttons. You can only press one button at one time.

Photoceall switch

1. There is short circuit pins option for the user on the receiver board. If you put the pin on "NO" position (factory default), it means you have connected photoceall OUT terminal with Photoceall reply NO. If the photoceall works, OUT and COM will be close. And when someone blocked the photoceall, the photoceall will be cut. When the short circuit pin adjusts on the "NC" position, it means that the photoceall OUT terminal is connected with photoceall NC relay. When the photoceall works, OUT and COM will be open. And when someone blocked the photoceall, the photoceall will be close. The users can choose what you need.
2. If you connect the photoceall with IN-FAR and COM when the motor opens the door, the photoceall will not be triggered. When the motor works and closes the door, the photoceall will be triggered, the motor will stop working. The photoceall will reverse to open the door after 0.5 seconds.

Limit Switch

1. When you choose auto switch, the motor will work until inner switch, the motor will stop moving. Meanwhile external limit switch terminal is invalid, even external limit switch terminal is triggered, if the inner limit switch of the motor doesn't be triggered, the motor will not stop working.
2. When you choose trigger limit switch, you can connect separately the two limit switches with UP LIMIT/DOWN LIMIT and COM. When the motor moves to the limit switch trigger the limit switch (UP LIMIT/DOWN LIMIT and COM will be close), the motor will stop moving. At the moment, the Auto Limit is invalid, even you trigger the inner limit switch, the motor will not stop working without triggering external limit switch.

**Dear Users:
Thank you for purchasing our products!**

Follow these steps to configure

APP Installation

1. Search for TuYa Smart app or Smart Life app in the application market, or scan the QR code as below, and choose to install them.



download QR code

2. Open the app after installation is complete then log in by your phone number.

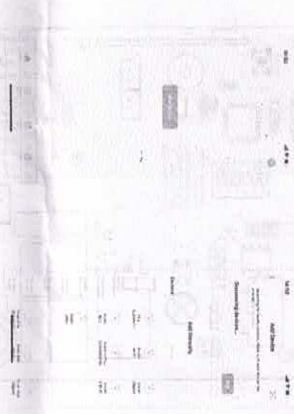
Add WiFi Remote Control

- (4) Enter the WiFi password and click Next. The device has been successfully added. Click "Finish".



• Add Device

- (1) When the remote control board is powered on, the blue will LED remains on which means entering standby mode.
- (2) Enter the TuYa APP and click "Add Device" on the Home screen. Press the "+"3 (open-stop) button at the same time, on the remote control for about 3 seconds, and the will LED will start flashing, entering the distribution network state.
- (3) The app automatically searches for new device, discover them, and click "Add Device".



Device Unbind

Method 1:

- 1) Select the icon in the upper right corner of the device, select "Remove Device" at the bottom, Disconnect, and Confirm.
- 2) The blue light on the remote control remains on and then starts flashing. After 3 minutes of no operation, the indicator light remains on and enters standby mode.

Note: Within 3 minutes of flashing, you can directly re-enter the distribution network state.

